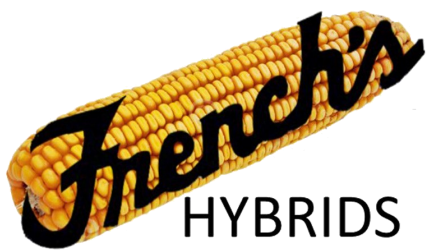


SOYBEAN guide

2022

Product Guide

SOYBEANS ~ Hybrid Corn ~ Fall Spelt ~ Spring Spelt
Forages & Cover Crops



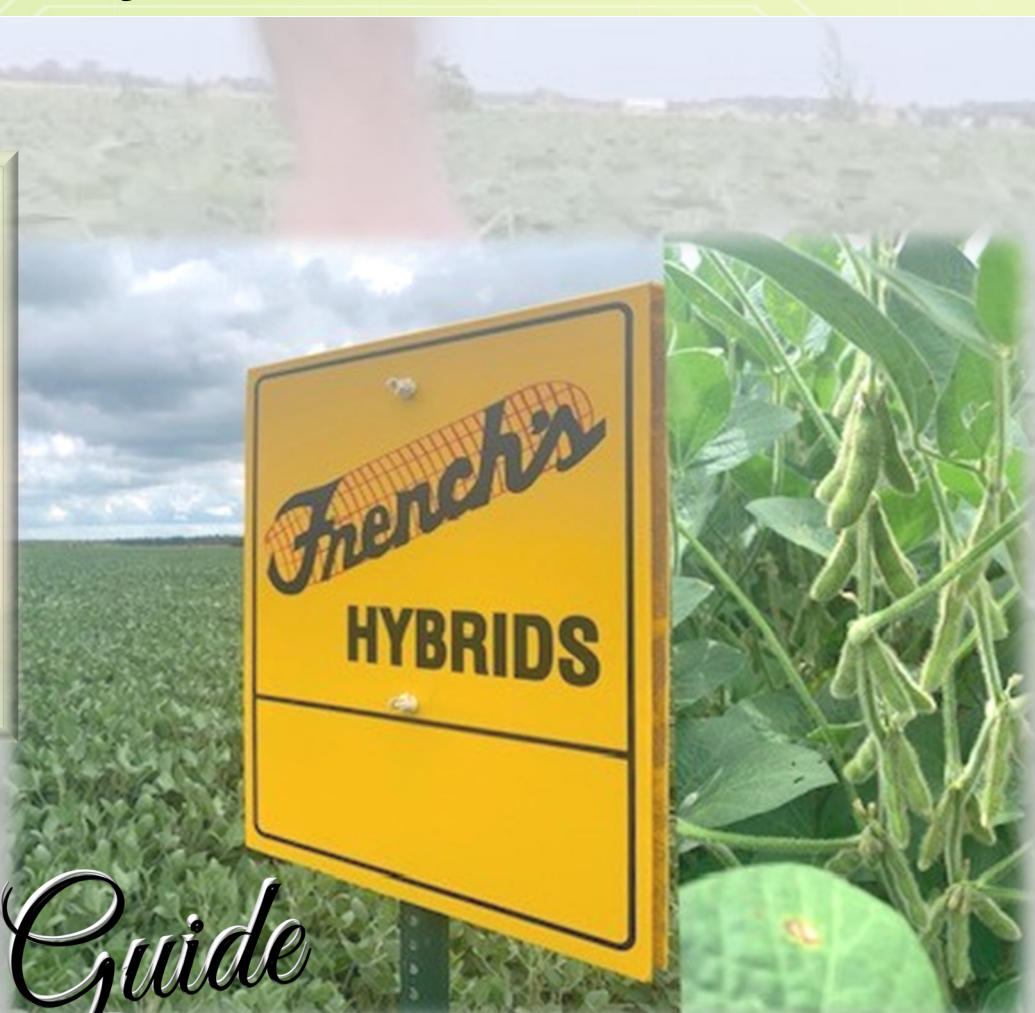
Barrett

Larry

Justin

Soybean Table of Contents

Enlist™ System	1
Soybean Fact Guide	2
Seed Piracy Statement	3-8
Enlist E3®, LibertyLinkGT27®, GT Soybeans	9-10
XtendFlex® Soybeans	11-12
Spring Spelt & Fall Spelt Varieties	13-14
Forages & Cover Crops	15-16



Soybean Product Guide

SOYBEAN

Enlist E3[®]

The Enlist E3[®] Soybean trait provides tolerance to new 2, 4-D choline in Enlist Duo[®] and Enlist One[™] herbicides, as well as, glyphosate and Liberty[®] herbicides.



When you plant Enlist E3[™] soybean varieties, you get crop tolerance of 2,4-D choline, glyphosate and glufosinate. Enlist E3[™] soybeans provide crop tolerance that enables you to use Enlist Duo[®] or Enlist One[™] herbicide as part of a program approach for weed control.

Use only herbicides authorized for application with Enlist E3[™] soybeans. Following burn-down, Enlist Duo[®] and Enlist One[™] with Colex-D[®] technology, are the only herbicides containing 2,4-D that are labeled for pre-emergence and post-emergence use with Enlist E3[™].

Exception weed control to fit your needs. Made for use with the Enlist[™] trait, Enlist Duo[®] and Enlist One[™] herbicides each feature 2,4-D choline with Colex-D[®] technology. The result: Unrivaled weed control designed to land and stay on target. For more information, consult your Enlist[™] System Resource Packet.



- New 2,4-D Choline
- Glyphosate
- Glufosinate

Following burndown, Enlist Duo[®] and Enlist One[®] with Colex-D[®] technology are the only herbicides containing 2,4-D that are labeled for preemergence and postemergence use with Enlist E3[™] soybeans.



- Convenient blend of 2,4-D choline and glyphosate
- Two modes of action to deliver control and help prevent resistance in your fields



- Straight-goods 2,4-D choline with additional tank-mix flexibility
- Ability to tank-mix with Liberty herbicide and other qualified herbicides, customizing the ratio of herbicides to match each farm's needs

On-Target Applications

- 90% less drift than traditional 2,4-D
- 96% less volatile than 2,4-D ester



Think Before You Bin-Run

Verification Required It is important that you check with your seed supplier to determine if a specific soybean variety is covered by intellectual property rights and if so, the policy for saving seed of that variety.

Higher Seeding Rate A higher seeding rate may be required for bin-run Roundup Ready[®] soybeans compared to new branded seed.

Yield Loss Roundup Ready 2 Yield[®] soybean varieties and Roundup Ready 2 Xtend[®] soybean varieties typically have a higher yield opportunity than Roundup Ready[®] soybean varieties*.

Cleanout Loss Loss of seed and / or shrink occurs during the seed cleaning and handling processes for bin-run seed.

Seed Treatment Costs Treating your seed will add costs—both the cost of the treatment and the application of that treatment.

Lost Income Every bushel of saved seed you plant is a bushel you're not selling as commodity grain.

Increased Seed Management If you plan to save and bin-run Roundup Ready[®] soybeans for planting, you will have to manage your harvest operations and grain storage so that the seed isn't co-mingled with other seed that's covered by intellectual property rights.

Monsanto receives calls and letters each year about potential seed compliance matters. Anyone with a concern or question can anonymously call 1-800-768-6387.

*Roundup Ready 2 Yield[®] soybeans and Roundup Ready 2 Xtend[®] soybeans are covered by different patents than original Roundup Ready[®] soybeans and cannot be saved and planted. For more information about seed innovation and intellectual property protection, please visit www.seedipalliance.com.

Monsanto Company is a subsidiary of Bayer AG.

High Value of New Branded Seed

Latest Technology

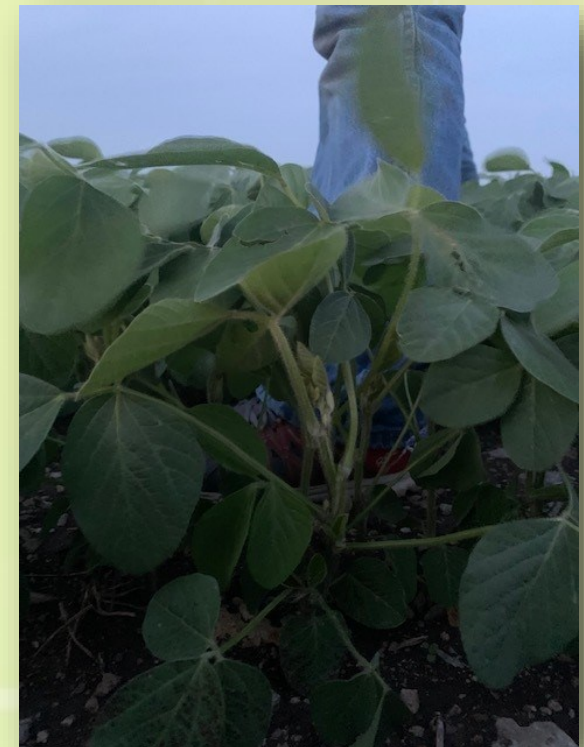
- High-yielding soybean technologies
- Better variety options
- Leading seed treatment options

Customer Service

- Dealer agronomic support before and after the sale
- Replant policy support
- Convenient packaging and delivery

Reliable Germination and Quality

- Rigorously tested and meets U.S. Federal Seed Act requirements
- Free of seed-borne diseases
- Properly stored and conditioned



SOYBEAN FACT GUIDE

All French's Hybrids soybean varieties are selected for the challenging growing conditions we always face in the North Coast region.

FRENCH'S VARIETIES ARE...

1. Produced under field and laboratory inspection guidelines.
2. Highly tolerant of Phytophthora Root Rot (PRR) using various gene selections.
3. Full Growth habit and suited to all row widths.
4. Proven for use in no-till systems.
5. Indeterminate in hypocotyl length (not sensitive to planting depth).
6. Treated seed.
7. Inoculated with N-Force and N-Hibit® Biological.



- All French's soybean varieties will have the number of seeds per pound listed on the seed tag and our seed is sold in **140,000 Seed Units**. Please consult with French's Hybrids for assistance in determining plant populations and be sure to set your planting unit accordingly.
- All varieties are available in bags, mini-bulk bags, Pro Boxes and True Bulk.
- Early ordering will help assure your favored varieties are available in your preferred package options.
- **Soybean trait packages are rapidly changing.**

WE NOW OFFER:

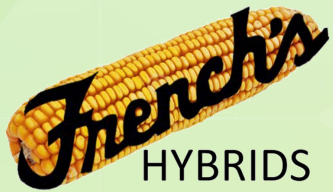
Enlist E3™

LibertyLink® GT27

GT (Glyphosate Tolerant)

Take Note

Not all traits or varieties are adapted to all locations or practices. French's Hybrids will be happy to help you make selections that fit your operation.



Seeds containing the Enlist, Herculex and PowerCore traits are protected under numerous US patents. Seeds containing patented traits can only be used to plant a single commercial crop and cannot be saved or replanted. You acknowledge and agree to be bound by the terms and conditions of the following documents in effect at the time of planting of this seed: (i) the *Technology Use Agreement* and (ii) the *Product Use Guides for all technologies in this seed*, including the Herbicide Resistance Management (HRM), and Use requirements detailed therein (www.corteva.us/Resources/trait-stewardship.html).

To plant Enlist, Herculex and PowerCore seed, you must have a limited license from Dow AgroSciences LLC (or other appropriate affiliates). In consideration of the foregoing, Dow AgroSciences grants to the Grower the limited license to use its technology to produce only a single commercial crop in the United States under the terms and conditions set forth in the *Technology Use Agreement* in effect at the time of planting of this seed.

Always read and follow herbicide label directions prior to use: Enlist™ products contain the Enlist trait that provides crop safety for use of labeled over-the-top applications of glyphosate, glufosinate and 2,4-D herbicides featuring Colex-D® technology when applied according to label directions. Following burndown, the only 2,4-D containing herbicide products that may be used with Enlist™ crops are products that feature Colex-D technology and are expressly labeled for use on Enlist crops. 2,4-D products that do not contain Colex-D technology are not authorized for use in conjunction with Enlist products. Dow AgroSciences is a member of Excellence Through Stewardship® (ETS). Dow AgroSciences products are commercialized in accordance with ETS product launch stewardship guidance and Dow AgroSciences Product Launch Stewardship Policy. No crop or material produced from this product can be exported to, used, processed or sold across boundaries into nations where import is not permitted. Growers should talk to their grain handler or product purchaser to confirm their buying position for this product. For further information about your crop or grain marketing options, contact DAS at 877-4-TRAITS (877-487-2487). Information regarding the regulatory and market status of agricultural biotechnology products can be found at: www.biotradestatus.com. Enlist E3™ soybeans were jointly developed by Dow AgroSciences LLC and MS Technologies, LLC. ©™ Enlist, Enlist E3, the Enlist E3 logo, and Colex-D are trademarks of The Dow Chemical Company ("Dow") or an affiliated company of Dow. Excellence Through Stewardship is a registered trademark.



Photo Credit:

Lauren Schmid Marketing + Design

SEED PIRACY STATEMENT

Seeds containing the LibertyLink® GT27™, Enlist E3™, GT traits are protected under numerous U.S. patents. Seed containing patented traits, such as seed containing LibertyLink® GT27™, Enlist E3™, GT traits, can only be used to plant a single commercial crop.

LibertyLink® GT27 is not tolerant to all HPPD herbicides. HPPD herbicides currently on the market are prohibited.

It is unlawful to save and replant Enlist E3™ Soybeans. Additional information and limitations on these products are provided in the Corteva Technology Stewardship Agreement and the Corteva Technology Use Guide.

Enlist E3™ soybean seeds containing the Enlist™ trait can only be used to plant a single commercial crop. It is unlawful to save and replant Enlist E3™ soybeans. Additional information and limitations on the use of these products are provided in the Dow AgroSciences Technology Use Agreement and

Enlist™ Soybean Product Use Guide. U.S. patents for Dow AgroSciences technologies can be found at the following webpage:

[www.corteva.us/
Resources/trait-
stewardship.html](http://www.corteva.us/Resources/trait-stewardship.html).



Progeny of these seeds cannot be cleaned or used for replanting or transferred to others for replanting. For Sale Only in the U.S.

SOYBEAN



PRODUCT	PRODUCTION							DISEASE/PEST					
	ADDITIONAL TRAIT	RELATIVE MATURITY (DAYS)	RELATIVE MATURITY RANGE	EMERGENCE	STANDABILITY	STRESS TOLERANCE	SOYBEAN CYST MARKER	SOYBEAN CYST RACE	PHYTOPHTHORA RESISTANCE	PHYTOPHTHORA FIELD TOLERANCE	WHITE MOLD	BROWN STEM ROT	
30E20	NA	NA	3.0	1	1	2	MR	P188.788	NG	1	NA	R	
34E20	NA	NA	3.4	2	1	2	MR	P188.788	RPS1c	2	NA	S	



LibertyLink® GT27® Soybeans 2.8-3.4 Relative Maturity

LibertyLink GT27 Soybeans are tolerant to Liberty® and glyphosate herbicides.

28GL20	NA	NA	2.8	2	2	1	MR	P188.788	NG	1	NA	R
36GL20	NA	NA	3.6	2	2	2	MR	P188.788	NG	1	NA	S



GT Soybeans possess in-plant tolerance to in-crop application of glyphosate herbicides.

New genetics with time-tested low cost herbicide tolerance.

Number 1 Seller in 2021 & 2020 Growing Seasons.

GT1830N	NA	NA	3.0	2	1	1	MR	NA	RPS1k	2	3	2
GT1935N	NA	NA	3.5	1	2	2	MR	NA	RPS1c	1	3	NA

PRODUCTION

1 Excellent
2 Very Good
3 Good
4 Fair
5 Poor
NR No Rating

BROWN STEM ROT

R Resistant
MR Moderately Resistant
S.# Susceptible, Tolerance Level

PLANT HEIGHT

T Tall
M/T Medium Tall
M Medium
M/S Medium Short
S Short

SOYBEAN CYST NEMATODE

NG No Gene
R Resistant
MR Moderately Resistant
Race 1, 3, 5, 9 or 14

PLANT TYPE

UBR Upright Branch
UB Upright Bush

FLOWER COLOR

P Purple
W White

POD WALL

BR Brown
TN Tan

PUBESCENCE

G Gray
T Tawny
LT Light Tawny

HILUM COLOR

BL Black
IBL Imperfect Black
B Buff
BR Brown

PHYTOPHTHORA RESISTANCE

NG No Gene
Rps 1a denotes resistance to Races 1, 2, 10, 11, 13-18, 24, 26, 27, 31, 32 & 36
Rps 1c denotes resistance to Races 1-3, 6-11, 13, 15, 17, 21, 23, 24, 26, 28-30, 32, 34 & 36
Rps 1k denotes resistance to Races 1-11, 13-15, 17, 18, 21-24, 26, 36 & 37
Rps 3a denotes resistance to Races 1-5, 8, 9, 11, 13, 14, 16, 18, 23, 25, 28, 29, 31-35



PLANT SEED						PRODUCT
PLANT HEIGHT	PLANT TYPE	FLOWER COLOR	PUBESCENCE	HILUM COLOR	POD WALL	
MT	UBR	P	G	IBL	TN	30E20
MT	UBR	P	LT	BL	TN	34E20

30E20 RM3.0

ENLIST E3™ SOYBEANS

- Excellent emergency & standability.
- Medium-tall plant.
- Outstanding stress tolerance.
- Super PRR, SDS, BSR scores.
- Tolerant to Enlist™ herbicide.

34E20 RM3.4

ENLIST E3™ SOYBEANS

- Excels in Eastern trials.
- Medium-tall, excellent standability.
- Exhibits outstanding pod set.
- Very good disease package.
- Tolerant to Enlist™ herbicide.



MT	UBR	P	LT	BR	TN	28GL20
MT	UBR	P	LT	BL	TN	36GL20

36GL20 RM3.6

LIBERTYLINK® SOYBEANS

- Tolerates Liberty® and/or glyphosate.
- Widely adaptable.
- Good Eastern performance.
- Fast emergence.
- Narrow or wide rows.
- Very good stress tolerance.
- Good root rot rating.

28GL20 RM2.8

LIBERTYLINK® SOYBEANS

- Tolerates Liberty® and/or glyphosate.
- Medium-tall with excellent standability.
- Very good stress tolerance.
- Fast emergence.
- Excellent Phytophthora tolerance.



MT	UBR	P	G	IBL	TN	GT1830N
T	UB	P	G	IBL	BR	GT1935N

GT1830N RM3.0

GT SOYBEANS

- High yield genetics in GT platform.
- Medium-bush plant, will not lodge.
- Rps/1K and good BSR.

GT1935N RM3.5

GT SOYBEANS

- Tall plant.
- Lots of branching.
- Fast emergence, good standability and very good white mold rating.
- Excellent field tolerance to phytophthora.

Improve Your Stand and Enrich Your Yields with **WycKOAT** Soybean Seed Treatment

Fueled by **SOY-DEFENSE**



WycKOAT

Fueled by **SOY-DEFENSE**

proprietary seed treatment has been designed for the best protection against the most damaging Indiana and Southern Michigan diseases and pest pressures. Made for improved plantability with polymers and dry additives. It's the only complete seed treatment on the market that offers high octane inoculant standard with over a 200-day planting window after application.

Active Ingredients:

- 3 Fungicides
- 1 Insecticide
- 1 Nematode Defense, SAR (Systemic Acquired Resistance) Activator, Bio-stimulant
- 1 Inoculant

Insects Controlled:

- Aphids
- Seed Corn Maggots
- White Grubs
- Leafhoppers
- Bean Leaf Beetles
- Thrips
- Wireworms

Diseases Controlled:

- Pythium Seed Rot, Damping Off, Seedling Blight
- Rhizoctonia Seed Rot, Damping Off, Seedling Blight
- Seed Decay Fungi
- Fusarium Seed Rot, Damping Off, Seedling Blight
- Phytophthora
- Diaporthe - Phomopsis on the seed coat
- SDS (Suppression)
- Seed-Borne White Mold

Nematodes Defended:

- Soybean Cyst Nematode
- Reniform Nematode
- Root-knot Nematode

Strengths of our new **SOY-DEFENSE** product

The active ingredient in **SOY-DEFENSE** was discovered and patented by Cornell University. It acts by triggering Systemic Acquired Resistance by turning on the plant's own defense system. Plants respond to **SOY-DEFENSE** by protecting itself from nematodes, magnifying vigor, proliferating root volume, increasing plant mass, and boosting higher yields.

SOY-DEFENSE works by suppressing SCN (soybean cyst nematode) egg production. Studies conducted by Dr. John Eisenback, Virginia Tech University, proved a 47% drop in cysts per plant, 47% drop in Eggs per plant, and a 67% drop in males per plant with **SOY-DEFENSE** compared to the untreated check. Less Eggs = Less Nematodes = Higher Yields

According to Jason Bond, plant pathologist at Southern Illinois University, fields with soybean cyst nematode pressure have been shown to be more susceptible to the pathogen that causes SDS (Sudden Death Syndrome). Shawn Conley, professor at the University of Wisconsin-Madison, goes even further suggesting that a seed treatment that reduces the number of SCN eggs can provide a yield benefit. Hence, our **SOY-DEFENSE** product, with its SCN egg reducing properties, along with SDS genetic resistance in Wyckoff Hybrids branded soybean products, will offer good sudden death syndrome tolerance.

Extra Protection Against SDS

WycKOAT
Fueled by **SOY-DEFENSE**

is using one of our current active ingredients at the absolute high rate, to offer manufacturer labeled Sudden Death Syndrome protection without the phytotoxicity of other SDS competitor products.

Cost

WycKOAT
Fueled by **SOY-DEFENSE**

and **WycKOAT**
Fueled by **SOY-DEFENSE**

are being offered at very competitive pricing. See your Wyckoff Hybrids representative for details.



LIBERTY LINK

Seed products with the LibertyLink® (LL) trait are resistant to the herbicide glufosinate ammonium, an alternative to glyphosate in corn, and combine high-yielding genetics with the powerful, non-selective, postemergent weed control of Liberty® herbicide for optimum yield and excellent weed control.



Before opening a bag of seed, be sure to read, understand and accept the stewardship requirements, including applicable refuge requirements for insect resistance management, for the biotechnology traits expressed in the seed as set forth in the Technology/Stewardship Agreement that you sign. By opening and using a bag of seed, you are reaffirming your obligation and agreement to comply with the most recent stewardship requirements.

Bayer is a member of Excellence Through Stewardship® (ETS). Bayer products are commercialized in accordance with ETS Product Launch Stewardship Guidance, and in compliance with Bayer's Policy for Commercialization of Biotechnology-Derived Plant Products in Commodity Crops. Commercialized products have been approved for import into key export markets with functioning regulatory systems. Any crop or material produced from this product can only be exported to, or used, processed or sold in countries where all necessary regulatory approvals have been granted. It is a violation of national and international law to move material containing biotech traits across boundaries into nations where import is not permitted. Growers should talk to their grain handler or product purchaser to confirm their buying position for this product. Excellence Through Stewardship® is a registered trademark of Excellence Through Stewardship.

brand dealer or refer to the Bayer Technology Use Guide for recommended weed control programs.

Insect control technology provided by Vip3A is utilized under license from Syngenta Crop Protection AG. Herculex® is a registered trademark of Dow AgroSciences LLC. Agrisure Viptera® is a registered trademark of a Syngenta group company. LibertyLink® and the Water Droplet Design® is a trademark of BASF Corporation. Respect the Refuge and Corn Design® and Respect the Refuge® are registered trademarks of National Corn Growers Association. Acceleron®, DroughtGard®, RIB Complete®, Roundup Ready 2 Technology and Design™, Roundup Ready 2 Xtend®, Roundup Ready 2 Yield®, Roundup Ready®, SmartStax®, Trecepta®, VT Double PRO® and XtendFlex® are trademarks of Bayer Group.



Seed containing a patented trait can only be used to plant a single commercial crop. It is unlawful to save and replant XtendFlex® soybeans. Additional information and limitations on the use of these products are provided in the Technology Stewardship Agreement and the Bayer Technology Use Guide: <https://tug.bayer.com>. U.S. patents for Bayer technologies can be found at the following webpage: <http://www.monsantotechnology.com>

Corteva Agriscience is a member of Excellence Through Stewardship® (ETS). Corteva Agriscience products are commercialized in accordance with ETS Product Launch Stewardship Guidance and in compliance with the Corteva Agriscience policies regarding stewardship of those products. In line with these guidelines, our product launch process for responsible launches of new products includes a longstanding process to evaluate export market information, value chain consultations, and regulatory functionality. Growers and end users must take all steps within their control to follow appropriate stewardship requirements and confirm their buyer's acceptance of the grain or other material being purchased. For more detailed information on the status of a trait or stack, please visit www.biotradestatus.com.

Seeds containing the Enlist, Herculex and PowerCore traits are protected under numerous US patents. Seeds containing patented traits can only be used to plant a single commercial crop and cannot be saved or replanted. You acknowledge and agree to be bound by the terms and conditions of the following documents in effect at the time of planting of this seed: (i) the Technology Use Agreement and (ii) the Product Use Guides for all technologies in this seed,

including the Herbicide Resistance Management (HRM), and Use requirements detailed therein (www.corteva.us/Resources/trait-stewardship.html). To plant Enlist, Herculex and PowerCore seed, you must have a limited license from Corteva Agriscience (or other appropriate affiliates). In consideration of the foregoing, Corteva Agriscience grants to the Grower the limited license to use its technology to produce only a single commercial crop in the United States under the terms and conditions set forth in the Technology Use Agreement in effect at the time of planting of this seed. Always read and follow herbicide label directions prior to use: Enlist® products contain the Enlist trait that provides crop safety for use of labeled over-the-top applications of glyphosate, glufosinate and 2,4-D herbicides featuring Colex-D® technology when applied according to label directions. Following burndown, the only 2,4-D containing herbicide products that may be used with Enlist® crops are products that feature Colex-D technology and are expressly labeled for use on Enlist crops. 2,4-D products that do not contain Colex-D technology are not authorized for use in conjunction with Enlist products.

The transgenic soybean event in Enlist E3® soybeans is jointly developed and owned by Corteva Agriscience and M.S. Technologies L.L.C.™ Enlist, Enlist E3, the Enlist E3 logo, and Colex-D are trademarks of Corteva Agriscience. Excellence Through Stewardship is a registered trademark of Excellence Through Stewardship

Enlist E3® soybean seeds containing the Enlist® trait can only be used to plant a single commercial crop. It is unlawful to save and replant Enlist E3® soybeans. Additional information and limitations on the use of these products are provided in the Corteva Agriscience Technology Use Agreement and Enlist® Soybean Product Use Guide. U.S. patents for Dow AgroSciences technologies can be found at the following webpage: www.corteva.us/Resources/trait-stewardship.html

Forage Genetics International, LLC ("FGI") is a member of Excellence Through Stewardship® (ETS). FGI products are commercialized in accordance with ETS Product Launch Stewardship Guidance, and in compliance with FGI's Policy for Commercialization of Biotechnology-Derived Plant Products in Commodity Crops. Roundup Ready® Alfalfa has pending import approvals. Any crop or material produced from this product can only be exported to, or used, processed or sold in countries where all necessary regulatory approvals have been granted. It is a violation of national and international law to move material containing biotech traits across boundaries into nations where import is not permitted. Growers should talk to their grain handler or product purchaser to confirm their buying position for this product. Growers should refer to <http://www.biotradestatus.com/> for any updated information on import country approvals. Excellence Through Stewardship® is a registered trademark of Excellence Through Stewardship.

ALWAYS READ AND FOLLOW PESTICIDE LABEL DIRECTIONS. Roundup Ready® Technology contains genes that confer tolerance to glyphosate. Glyphosate will kill crops that are not tolerant to glyphosate. Roundup Ready® and Roundup® are registered trademarks of Bayer Group, used under license by Forage Genetics International, LLC.

More information about Agrisure Duracade® is available at <http://www.biotradestatus.com/>.

Important: Always read and follow label and bag tag instructions; only those labeled as tolerant to glufosinate may be sprayed with glufosinate ammonium based herbicides.

Important: Always read and follow label instructions. Some products may not be registered for sale or use in all states or counties. Please check with your local extension service to ensure registration status.

CruiserMaxx® Corn 250 is an on-seed application of Cruiser® 5FS insecticide delivered at the 0.25 mg a.i./seed rate and Maxim® Quattro fungicide. Agrisure®, Agrisure Artesian®, Artesian™, Agrisure Duracade®, Agrisure Viptera®, Cruiser®, CruiserMaxx®, E-Z Refuge® and Maxim® are trademarks of a Syngenta Group Company. Agrisure® Technology incorporated into these seeds is commercialized under license from Syngenta Seeds, LLC. Herculex® Technology incorporated into these seeds is commercialized under license from Dow AgroSciences, LLC. HERCULEX® and the HERCULEX Shield are trademarks of Dow AgroSciences, LLC. YieldGard VT Pro® is a registered trademark used under license from the Bayer Group.

Seeds containing the LibertyLink® trait may be protected under one or more U.S. patents and may be planted only to produce one (1) commercial crop in a single season, and only after signing a BASF Grower Technology Agreement. It is illegal to save seeds containing the LibertyLink trait for use as planting seed or for transfer to others for use as planting seed.

LibertyLink® GT27® soybeans offer triple stack tolerance to Liberty, glyphosate, and, in select counties specified on the label, the first HPPD based herbicide for soybeans—Alite™ 27. Other HPPD herbicides not labeled for use with LibertyLink GT27 or isoxaflutole-resistant soybeans may cause significant crop injury. Alite 27 herbicide is only available for use in labeled counties.

Always read and follow label directions. Alite 27 is a restricted use herbicide. Alite, Liberty, and LibertyLink are registered trademarks of BASF. GT27 is a registered trademark of M.S. Technologies, L.L.C. MS Technologies is a trademark of M.S. Technologies, L.L.C. ©2020 BASF Corporation / M.S. Technologies, L.L.C. All Rights Reserved. APN 20-INT-0014

ALWAYS READ AND FOLLOW PESTICIDE LABEL DIRECTIONS. It is a violation of federal and state law to use any pesticide product other than in accordance with its labeling. NOT ALL formulations of dicamba or glyphosate are approved for in-crop use with Roundup Ready 2 Xtend® soybeans. NOT ALL formulations of dicamba, glyphosate or glufosinate are approved for in-crop use with products with XtendFlex® Technology. ONLY USE FORMULATIONS THAT ARE SPECIFICALLY LABELED FOR SUCH USES AND APPROVED FOR SUCH USE IN THE STATE OF APPLICATION. Contact the U.S. EPA and your state pesticide regulatory agency with any questions about the approval status of dicamba herbicide products for in-crop use with Roundup Ready 2 Xtend® soybeans or products with XtendFlex® Technology.



B.t. products may not yet be registered in all states. Check with your seed brand representative for the registration status in your state.

IMPORTANT IRM INFORMATION: RIB Complete® corn blend products do not require the planting of a structured refuge except in the Cotton-Growing Area where corn earworm is a significant pest. See the IRM/Grower Guide for additional information. Always read and follow IRM requirements.

Roundup Ready® 2 Technology contains genes that confer tolerance to glyphosate. Roundup Ready 2 Xtend® soybeans contain genes that confer tolerance to glyphosate and dicamba. Products with XtendFlex® Technology contains genes that confer tolerance to glyphosate, glufosinate and dicamba. Glyphosate will kill crops that are not tolerant to glyphosate. Dicamba will kill crops that are not tolerant to dicamba. Glufosinate will kill crops that are not tolerant to glufosinate. Contact your seed



SOYBEAN

Enlist E3®

2.3-2.9 Relative Maturity

The Enlist E3® Soybean trait provides tolerance to new 2, 4-D choline in Enlist Duo® and Enlist One® herbicides, as well as, glyphosate and Liberty® herbicides.



PRODUCT	PRODUCTION							DISEASE/PEST						
	WYCKOFF SOYBEAN VARIETIES	ADDITIONAL TRAIT	RELATIVE MATURITY	RELATIVE MATURITY (DAYS) RANGE	EMERGENCE	STANDABILITY	STRESS TOLERANCE	SOYBEAN CYST MARKER	SOYBEAN CYST RACE	PHYTOPHTHORA RESISTANCE	PHYTOPHTHORA FIELD TOLERANCE	WHITE MOLD	BROWN STEM ROT	SDS
	W2321E3		2.3	2.2-2.3	1	2	2	PI 88.788	R3, MR14	Rps 1k	2	1	R, 1	1
NEW	W2460E3	STS	2.4	2.3-2.5	1	2	1	PI 88.788	R3, MR14	Rps 1k	1	3	R, 1	2
	W2521E3		2.5	2.5-2.6	1	4	1	PI 88.788	R3, MR14	NG	2	3	R, 1	3
	W2619E3	Peking	2.6	2.6-2.7	2	2	1	Peking	MR1, R3, MR9	Rps 1k	2	3	S, 3	2
NEW	W2860E3		2.8	2.7-2.8	1	2	2	PI 88.788	R3, MR14	Rps 1c	2	3	S, 3	2
NEW	W2960E3		2.9	2.8-3.0	1	1	1	PI 88.788	R3, MR14	Rps 1k	2	NR	S, 3	3



Wyckoat Fueled by Soy-Defense Stand Improvement and Yield Enriching System Bean Treatment Available Upon Request Before March 1, 2022

PRODUCTION 1 Excellent 2 Very Good 3 Good 4 Fair 5 Poor NR No Rating	BROWN STEM ROT R Resistant MR Moderately Resistant S.# Susceptible, Tolerance Level	PLANT HEIGHT T Tall M/T Medium Tall M Medium M/S Medium Short S Short	SOYBEAN CYST NEMATODE NG No Gene R Resistant MR Moderately Resistant # Race 1, 3, 5, 9 or 14	PLANT TYPE UBR Upright Branch UB Upright Bush FLOWER COLOR P Purple W White POD WALL BR Brown TN Tan	PUBESCENCE G Gray T Tawny LT Light Tawny HILUM COLOR BL Black IBL Imperfect Black BF Buff BR Brown	PHYTOPHTHORA RESISTANCE NG No Gene Rps 1a denotes resistance to Races 1, 2, 10, 11, 13-18, 24, 26, 27, 31, 32 & 36 Rps 1c denotes resistance to Races 1-3, 6-11, 13, 15, 17, 21, 23, 24, 26, 28-30, 32, 34 & 36 Rps 1k denotes resistance to Races 1-11, 13-15, 17, 18, 21-24, 26, 36 & 37 Rps 3a denotes resistance to Races 1-5, 8, 9, 11, 13, 14, 16, 18, 23, 25, 28, 29, 31-35
---	---	---	---	---	--	--



PLANT SEED						PRODUCT
PLANT HEIGHT	PLANT TYPE	FLOWER COLOR	PUBESCENCE	HILUM COLOR	POD WALL	WYCKOFF SOYBEAN VARIETIES
M	UBR	P	G	BF	TN	W2321E3
M	UBR	W	G	BF	TN	W2460E3 NEW
M/T	UB	P	G	IBL	BR	W2521E3
M/T	UBR	P	G	BF	TN	W2619E3
M	UBR	P	G	BF	BR	W2860E3 NEW
M	UB	P	G	IBL	BR	W2960E3 NEW

W2321E3

RM 2.3

Key Early Group II with Yield and Agronomics

- Widely Adapted Across Soils and Environments with Offense/Defense...A must Plant Variety!
- Proven Disease Package with Excellent SDS, PRR, and White Mold Tolerance / Resistant to Brown Stem Rot
- Remarkable Standability and Emergence Coupled with its Maturity Will Make a Lead Product on High Organic Soils and Irrigation
- Enlist E3 Weed Control System

W2619E3

RM 2.6

Mid Group II with Alternative Source Peking Soybean Cyst Resistance

- Excellent Variety for Cyst Prone Fields with Very Good SDS Tolerance and Emergence
- Medium-Tall Plant Height to Handle Tougher Soils with Very Good Standability
- Very Good Field Tolerance Score for Phytophthora Root Rot
- Great Eye Appeal with an Attractive Blonde Look at Harvest
- Enlist E3 Weed Control System

W2460E3

NEW

RM 2.4

"New" Early/Mid Group II with Step Change in YIELD

- "Must Have" Genetics for the Mid Group IIs
- Excellent on Brown Stem Rot with Above Average Tolerance to SDS
- Great Adaptability to All Soils and Environments with Outstanding Stress Tolerance
- Gorgeous Looking Plant in the Fall with a "Clean" Look
- Enlist E3 Weed Control System

W2860E3

NEW

RM 2.8

"New" Genetically Diverse Late Group II

- Excels Across Broad Acres / Wide Range of Adaptability
- Handles Stress Well / Solid Performance in Low Yield Environments
- Attractive "Clean" Fall Appearance with Good Standability
- PRR Rps1c Gene with Great Field Tolerance
- Enlist E3 Weed Control System

W2521E3

RM 2.5

Mid Group II with "Burly" YIELD

- Medium-Tall Plant that won't Shrink under Stress / Fantastic Stress Tolerance
- Resistance to Frogeye Leaf Spot, Stem Canker and Brown Stem Rot / Average on SDS and White Mold
- Produces Quick and Even Emergence for Pleasing Stands in Cool Springs and No-Till Situations
- Enlist E3 Weed Control System

W2960E3

NEW

RM 2.9

From Fence Row to Fence Row... Bin Busting Yield Potential

- Brings a New Level of Performance in the Late Group II Maturity / Beats W2819E3 and W3020E3 by 3 Bushels per Acre!
- Stands Well with Good Height and Width to Handle all Row Spacings and Irrigated Acres
- Very Good Emergence and PRR Field Tolerance with Above Average SDS Rating
- Broad Acre Variety that is a "Must Plant" on many Acres in 2022
- Enlist E3 Weed Control System

SOYBEAN

Enlist E3[®]

3.0-3.8 Relative Maturity

The Enlist E3[®] Soybean trait provides tolerance to new 2, 4-D choline in Enlist Duo[®] and Enlist One[™] herbicides, as well as, glyphosate and Liberty[®] herbicides.

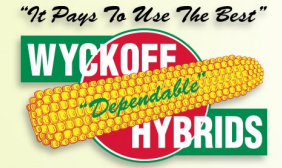


PRODUCT	PRODUCTION						DISEASE/PEST							
	WYCKOFF SOYBEAN VARIETIES	ADDITIONAL TRAIT	RELATIVE MATURITY (DAYS)	RELATIVE MATURITY RANGE	EMERGENCE	STANDABILITY	STRESS TOLERANCE	SOYBEAN CYST MARKER	SOYBEAN CYST RACE	PHYTOPHTHORA RESISTANCE	PHYTOPHTHORA FIELD TOLERANCE	WHITE MOLD	BROWN STEM ROT	SUDDEN DEATH SYNDROME
NEW	W3060E3		3.0	2.9-3.0	1	1	1	PI 88.788	R3, MR14	NG	1	NR	R, 1	2
NEW	W3160E3		3.1	3.0-3.1	1	1	2	PI 88.788	MR3	Rps 3a, Rps 1k	1	2	MR, 2	1
NEW	W3260E3		3.2	3.1-3.2	1	2	1	PI 88.788	R3, MR14	NG	2	NR	S, 3	2
	W3221E3		3.2	3.2-3.3	1	3	1	PI 88.788	R3, MR14	Rps 1c	1	3	MR, 2	3
NEW	W3460E3		3.4	3.3-3.5	1	1	1	PI 88.788	R3, MR14	Rps 1k	2	2	R, 1	1
	W3621E3		3.6	3.5-3.7	2	3	1	PI 88.788	R3, MR14	Rps 1k	2	3	R, 1	2
	W3821E3		3.8	3.7-3.9	1	2	1	PI 88.788	R3, MR14	NG	1	NR	S, 3	3



Wyckoat Fueled by Soy-Defense Stand Improvement and Yield Enriching System Bean Treatment Available Upon Request Before March 1, 2022

PRODUCTION 1 Excellent 2 Very Good 3 Good 4 Fair 5 Poor NR No Rating	BROWN STEM ROT R Resistant MR Moderately Resistant S.# Susceptible, Tolerance Level	PLANT HEIGHT T Tall M/T Medium Tall M Medium M/S Medium Short S Short	SOYBEAN CYST NEMATODE NG No Gene R Resistant MR Moderately Resistant # Race 1, 3, 5, 9 or 14	PLANT TYPE UBR Upright Branch UB Upright Bush FLOWER COLOR P Purple W White POD WALL BR Brown TN Tan	PUBESCENCE G Gray T Tawny LT Light Tawny HILUM COLOR BL Black IBL Imperfect Black BF Buff BR Brown	PHYTOPHTHORA RESISTANCE NG No Gene Rps 1a denotes resistance to Races 1, 2, 10, 11, 13-18, 24, 26, 27, 31, 32 & 36 Rps 1c denotes resistance to Races 1-3, 6-11, 13, 15, 17, 21, 23, 24, 26, 28-30, 32, 34 & 36 Rps 1k denotes resistance to Races 1-11, 13-15, 17, 18, 21-24, 26, 36 & 37 Rps 3a denotes resistance to Races 1-5, 8, 9, 11, 13, 14, 16, 18, 23, 25, 28, 29, 31-35
---	---	---	---	---	--	--



PLANT SEED						PRODUCT
PLANT HEIGHT	PLANT TYPE	FLOWER COLOR	PUBESCENCE	HILUM COLOR	POD WALL	WYCKOFF SOYBEAN VARIETIES
M/T	UB	P	G	IBL	TN	W3060E3 NEW
M	UBR	W	G	BF	TN	W3160E3 NEW
M/T	UB	P	G	IBL	TN	W3260E3 NEW
M/T	UBR	W	G	BF	BR	W3221E3
M/T	UBR	P	LT	BL	BR	W3460E3 NEW
M/T	UB	P	G	IBL	TN	W3621E3
M/T	UBR	W	LT	BR	BR	W3821E3

W3060E3 **NEW** RM 3.0

"New" Enlist E3 with Yield and Agronomics Built for Indiana

- Medium Tall Plant Height with Excellent Standability for Ease of Harvest / Great Choice for Irrigated Acres
- Broadly Adapted Variety that Handles all Soils / Expect Top Yields in Every Environment
- Excellent All Season Plant Health, Emergence, and PRR Field Tolerance / Above Average SDS Tolerance
- W3060E3 Has a Significant Yield Bump over W3020E3 in Indiana, Ohio and Lower Michigan
- Enlist E3 Weed Control System

W3160E3 **NEW** RM 3.1

"New" Early Group III with Unique Genetics

- Strong Performance in Testing / Brings Diversity to the Early III Lineup
- Medium-Statured Gray Plant with White Flowers
- Great Standability for Ease of Harvest
- Double Stacked PRR with Rps1k and Rps3a Genes and Very Good SDS Tolerance
- Enlist E3 Weed Control System

W3260E3 **NEW** RM 3.2

Superior Yield Performance Acre after Acre

- Top End Offensive Variety with the Ability to Handle Variable Soils and Low Yield Environments
- Bushy and Branchy with Very Good Standability / Handles all Row Widths
- Excellent Emergence with Very Good PRR Field Tolerance / No Gene Resistance
- Above Average Tolerance to SDS and Frogeye Leaf Spot
- Beats W3121E3 and W3321E3 by Bushels!
- Enlist E3 Weed Control System

W3221E3 RM 3.2

Early Group III "Beast for the East"

- Awesome Yields in 2 Years of Elite Testing... Complete Dominance in Indiana and Ohio
- Medium-Tall Plant that Does not Shrink under Stress / Well adapted for Sands and Tight Clays
- Amazing Emergence / Will Jump Out of the Ground / Great No-Till Variety
- Awesome for Wet Feet / Great Phytophthora Field Tolerance...Has the C Gene
- Very Good Against Frogeye Leaf Spot, Stem Canker and Brown Stem Rot
- Enlist E3 Weed Control System

W3460E3 **NEW** RM 3.4

"New" Mid Group III with Superior Yield Performance and Wide Adaptability

- Outstanding in Both High and Low Yield Environments...A Perfect Balance of Offense and Defense
- Stunning Light Tawny - Brown Pod Variety with Very Good Standability
- Handles All Soils with Fast and Even Emergence / Medium Tall Bushy Variety with Excellent Wide Row Adaptability
- Excellent Disease Package...Brings a New Level of SDS Tolerance at this Maturity
- Enlist E3 Weed Control System

W3621E3 RM 3.6

Outstanding "Top End" Enlist E3 Variety with Great Defense

- Medium-Tall Bushy Variety that is Stable... Will Yield Well in any Environment / Has Excellent Stress Tolerance
- Fast Out of the Ground with Above Average Standability
- Very Good Disease Package...Excellent SDS Tolerance and Resistant to Stem Canker and BSR
- PRR Rps1k Gene with Very Good Field Tolerance to Handle Those Poorly Drained Soils
- Fits Nicely in the Group 3.5-3.7 Maturity Range with Yield Improvements over Older Enlist Lines
- Enlist E3 Weed Control System

W3821E3 RM 3.8

Late Group III Enlist E3 Light Tawny Yield Dominator

- High Level of Yield Stability over Environments in Research Testing / 2 Bushels Better over Past Enlist E3's at this Maturity
- Gorgeous Light Tawny Medium-Tall Plant with Above Average Standability
- Moves Well from North to South when Used as a Late or Early Variety in Zone
- Table Top Uniformity with Prolific Podding
- Always Use WycKOAT Fueled by Soy-Defense Seed Treatment for Enhanced PRR Protection
- Enlist E3 Weed Control System

SOYBEAN

XtendFlex® Soybeans

2.5-2.9 Relative Maturity



XtendFlex® Soybeans are tolerant to approved dicamba, glyphosate, and Liberty® herbicides.

PRODUCT		PRODUCTION						DISEASE/PEST					
WYCKOFF SOYBEAN VARIETIES	ADDITIONAL TRAIT	RELATIVE MATURITY (DAYS)	RELATIVE MATURITY RANGE	EMERGENCE	STANDABILITY	STRESS TOLERANCE	SOYBEAN CYST MARKER	SOYBEAN CYST RACE	PHYTOPHTHORA RESISTANCE	PHYTOPHTHORA FIELD TOLERANCE	WHITE MOLD	BROWN STEM ROT	SDS
W2501XF		2.5	2.4-2.5	2	1	1	PI 88.788	R3	Rps 1c	4	3	R, 1	3
W2901XF	STS	2.9	2.8-3.0	2	3	2	PI 88.788	R3	Rps 1c	4	3	R, 1	3

Conventional Soybeans

2.8-2.9 Relative Maturity

NEW	W281C	Hartwig	2.8	2.7-2.9	2	2	1	PI 88.788/ 437654	ALL	Rps 1k	1	3	NR	3
	W291C		2.9	2.8-3.0	1	2	2	PI 88.788	R3, MR14	Rps 1k	1	NR	MR, 2	2



Wyckoat Fueled by Soy-Defense Stand Improvement and Yield Enriching System Bean Treatment Available Upon Request Before March 1, 2022

PRODUCTION 1 Excellent 2 Very Good 3 Good 4 Fair 5 Poor NR No Rating	BROWN STEM ROT R Resistant MR Moderately Resistant S.# Susceptible, Tolerance Level	PLANT HEIGHT T Tall M/T Medium Tall M Medium M/S Medium Short S Short	SOYBEAN CYST NEMATODE NG No Gene R Resistant MR Moderately Resistant # Race 1, 3, 5, 9 or 14	PLANT TYPE UBR Upright Branch UB Upright Bush FLOWER COLOR P Purple W White POD WALL BR Brown TN Tan	PUBESCENCE G Gray T Tawny LT Light Tawny HILUM COLOR BL Black IBL Imperfect Black BF Buff BR Brown	PHYTOPHTHORA RESISTANCE NG No Gene Rps 1a denotes resistance to Races 1, 2, 10, 11, 13-18, 24, 26, 27, 31, 32 & 36 Rps 1c denotes resistance to Races 1-3, 6-11, 13, 15, 17, 21, 23, 24, 26, 28-30, 32, 34 & 36	Rps 1k denotes resistance to Races 1-11, 13-15, 17, 18, 21-24, 26, 36 & 37 Rps 3a denotes resistance to Races 1-5, 8, 9, 11, 13, 14, 16, 18, 23, 25, 28, 29, 31-35
---	---	---	---	---	--	---	---



PLANT SEED						PRODUCT
PLANT HEIGHT	PLANT TYPE	FLOWER COLOR	PUBESCENCE	HILUM COLOR	POD WALL	WYCKOFF SOYBEAN VARIETIES
M/T	UB	P	G	IBL	TN	W2501XF
M	UBR	P	G	IBL	BR	W2901XF

M	UBR	P	G	BF	TN	W281C	NEW
M/T	UBR	P	LT	BL	TN	W291C	

W2501XF

Solid Mid Group II XtendFlex® with Yield-Ability

- 2.4 Bushels Better Higher yield over our Solid Line W2403CX2 in Testing.
- Medium-Tall Bushy Plant Style that Branches out to Fill Rows
- Favorable Standability with Consistent Emergence
- Watch Placement on Historical SDS Prone Soils
- XtendFlex® Crop System for Herbicide Flexibility and Enhanced Weed Control

RM 2.5

W2901XF

Late Group II XtendFlex® with Outstanding Yield Performance

- Great Performance in Indiana, Southern Michigan, and Ohio
- Solid Disease Package with BSR Resistance and Good SDS Tolerance
- Dark Green and Beautiful Looking Plant through the Growing Season
- Average PRR Field Tolerance / Use WycKOAT Fueled by Soy-defense to Enhance PRR Protection
- XtendFlex® Crop System for Herbicide Flexibility and Enhanced Weed Control

RM 2.9

W281C

Late Group II Conventional Variety Virtually Immune to Soybean Cyst Nematode

- Outstanding Top End Yield Potential with Best Cyst Resistance Known to the Entire Soybean Industry
- Fantastic Yields in Testing in the Late Group IIs
- Medium Height Variety with Great Lateral Branching
- Outstanding Field Tolerance to Phytophthora with the Rps 1k Gene

NEW

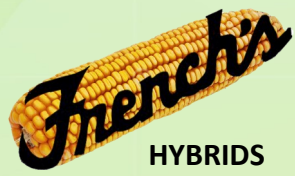
RM 2.8

W291C

Late Group II Conventional Variety with Top End Yield

- Yields with the Best Trained Varieties Out There / At the Top of Elite Tests 3 Years Running
- Attractive Light Tawny Brown Color, Medium Tall Bushy Plant Style with Good Standability
- Solid Overall Disease Package with Above Average SDS Tolerance and Phytophthora Field Tolerance
- Strong Emergence and Soil Adaptability / Will Yield in all Row Widths...Plant with Confidence

RM 2.9



Spelt

A Forgotten Treasure

Spelt is an ancient grain that has a variety of uses & benefits. It is a cereal grain and should not be confused with wheat. Spelt is vastly being re-introduced into the flour industry, the animal feed industry and more. Spelt is very a versatile grain. It is highly digestible, very palatable, high in protein and high in fiber

Spring Spelt

CDC ORIGIN SPELT

- ◆ **Certified Seed**
- ◆ **High Yielding Spring Seeded**
- ◆ **Maturity From 105 to 110 Days**
- ◆ **Very Good Standability**
- ◆ **Good Test Weight**
- ◆ **High Protein (16% +/-)**
- ◆ **High Tillering Capacity**
- ◆ **Moderate Resistance to Leaf Rust & Fusarium Head Blight**
- ◆ **Resistant to Loose Smut & Common Bunt**
- ◆ **Seed Between 150-200# Per Acre**
- ◆ **Seeding Date Similar to that of Spring Oats & Spring Barley; Depending on Location**

Fall Spelt

Comet

- ◆ Comet is an exciting release exclusive to French's. This true spelt is easily distinguishable from other varieties due to its short stature, earliness and its creamy off-white chaff. Comet averages 10-12 inches shorter than Maverick.
- ◆ It is about the same maturity as Maverick. Comet is a high yielding, high protein variety. It has much improved test weight and protein content approaching 16%. Comet has excellent standability and will tolerate higher fertility than other spelt varieties. We recommend this variety for feed use.
- ◆ **Do Not Use Comet For Straw Production.**

Sungold

- ◆ Sungold is 2-3 days later maturing than Maverick, exhibiting better standability and winter survival. It is slightly taller than Maverick. Sungold is easily distinguishable from Maverick as it has medium-brown chaff. It's well adapted to our Midwestern growing conditions. Sungold is also an excellent grain yielder and has very good protein levels. This variety has excellent standability and is an excellent straw yielder.
- ◆ **Sungold is a Food-Grade Spelt with Excellent Baking Qualities.**

Sonic

- ◆ Sonic is a recently released cultivar exclusive to French's. Sonic is a full-season, tall, robust variety. Awnless and brown-chaffed, Sonic is well adapted for grain production, but excels as a forage and/or straw producer. Sonic also has very good protein levels and possesses excellent disease tolerance.
- ◆ In 2006, Sonic exhibited 5% leaf rust while Oberkulmer had 45%.
- ◆ In 2013, Sonic exhibited 2% leaf rust while Oberkulmer had 55%.
- ◆ **Sonic is Well-Suited for Grain or Forage/Straw Production.**

Maverick

- ◆ A true spelt licensed exclusively to French's, Maverick resulted from the efforts of Dr. Howard N. Lafever. Maverick is a white-chaffed spelt variety averaging several inches shorter and maturing 5 days earlier than Champ.
- ◆ Maverick has improved winter survival over other varieties & improved test weight. Protein content is very acceptable. Maverick has demonstrated far superior baking qualities to other commonly used varieties.
- ◆ **Recommended for Milling/Baking. Also Excellent**



Forages

Clover Alfalfa Forage Grasses Turf Grasses

- ◆ Custom Blending Available at No Charge.
- ◆ Special Orders Available at No Charge.
- ◆ Other Products / Mixes Available.
- ◆ Please Ask If You Require Any Special Items.





6484 State Route 303 ● Wakeman, Ohio 44889
440-839-2934 ● www.frenchshybrids.com ● frenchs@frenchshybrids.com